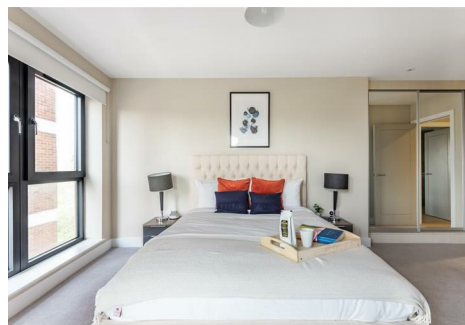


est 1979

Jeremy
Leaf & Co.



Nether Street, London, N3

Offers In Excess Of £525,000

- 0.1 miles from Finchley Central Tube Station (Northern Line)
- Secure Underground Parking
- Private Balcony
- Integrated Appliances
- Secure Cycle Storage
- Fitted wardrobes to main bedroom

863 High Road, London, N12 8PT
020 8446 4295

newhomes@jeremyleaf.co.uk
<https://www.jeremyleaf.co.uk/>

Nether Street, London, N3 1QG

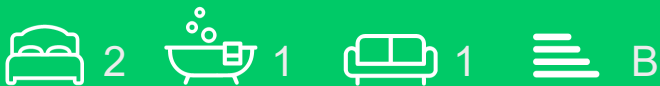
Two bedroom apartment on the third floor with a private balcony and allocated underground parking.

Adastra House is a high specification new development of 1,2 & 3 bedroom apartments situated in the heart of Finchley just 0.1 miles from Finchley Central Tube Station (Northern Line) and multiple shops and restaurants.

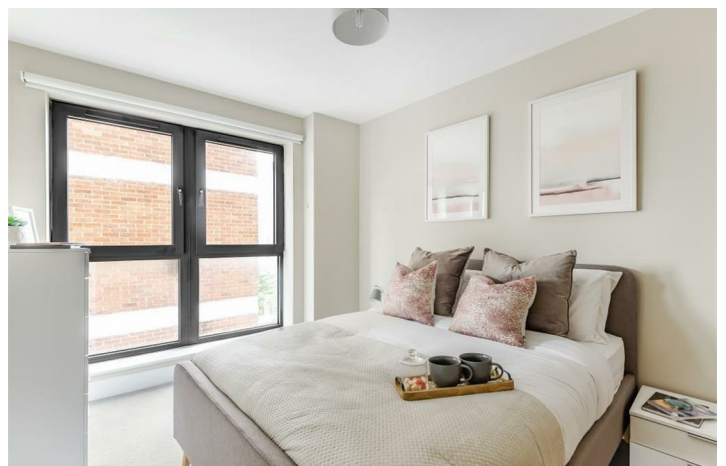
Features Include:

- Fully fitted kitchen with integrated appliances
- Fitted wardrobes to main bedroom
- Lift service to all floors
- 250 year lease from 1st January 2018
- Secure underground parking
- 2 years remaining on structural warranty.

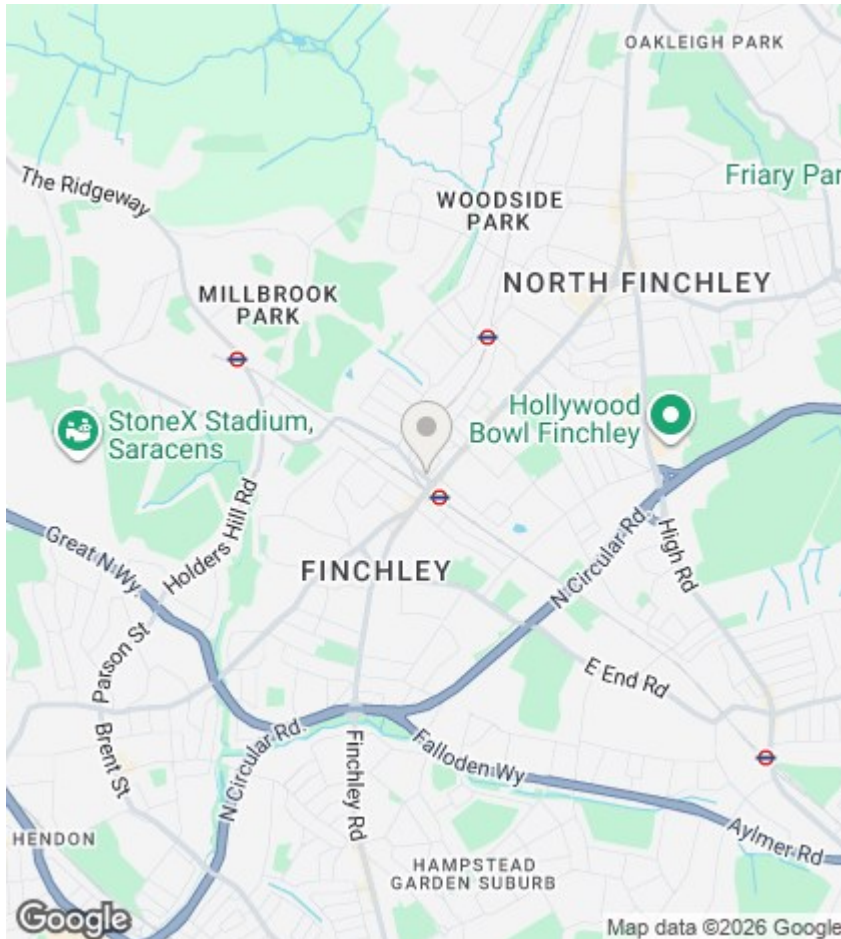
Please contact our new homes team for more information or to arrange a viewing.



Council Tax Band: D







Directions

Viewings

Viewings by arrangement only. Call 020 8446 4295 to make an appointment.

EPC Rating:

B

Energy Efficiency Rating		
	Current	Potential
Very energy efficient - lower running costs		
(92 plus) A		
(81-91) B	85	85
(69-80) C		
(55-68) D		
(39-54) E		
(21-38) F		
(1-20) G		
Not energy efficient - higher running costs		
England & Wales		EU Directive 2002/91/EC

